

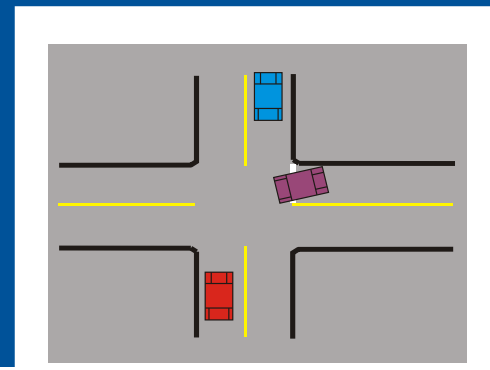
What is Level of Service (LOS)?

Level of Service is a quantitative measure of traffic operational conditions. Ranges of operation are defined for each type of roadway section (signalized intersections, freeways, ramp junctions and weaving sections) and are related to the amount of traffic demand at a given time as compared to the capacity of that type of roadway section.

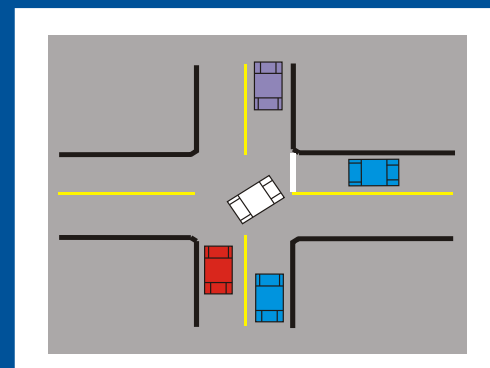
Six levels of service are defined for each type of roadway section and are given letter designations from A to F, with A representing good operating conditions and F representing unsatisfactory operating conditions.

Intersection

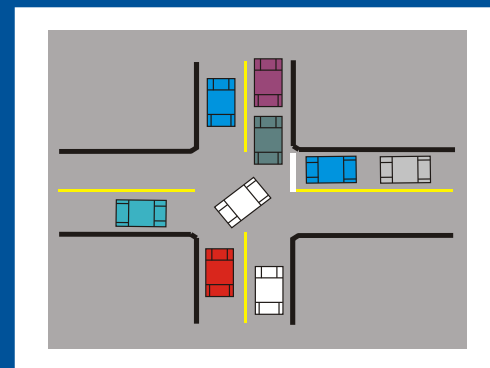
- Highly stable, free-flow condition with little or no congestion
- Delay: <10 seconds/vehicle



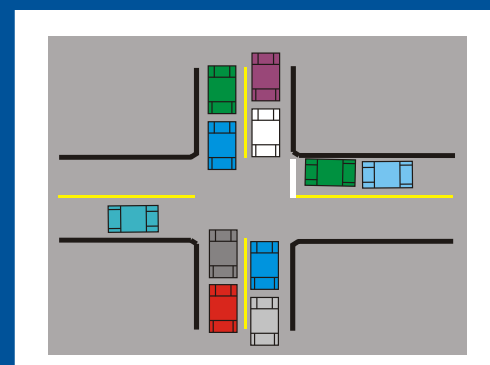
- Stable, free-flow condition with little congestion
- Delay: 10 to 20 seconds/vehicle



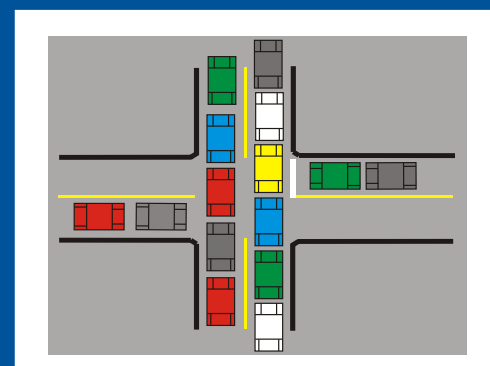
- Free-flow condition with moderate congestion
- Delay: 20 to 35 seconds/vehicle



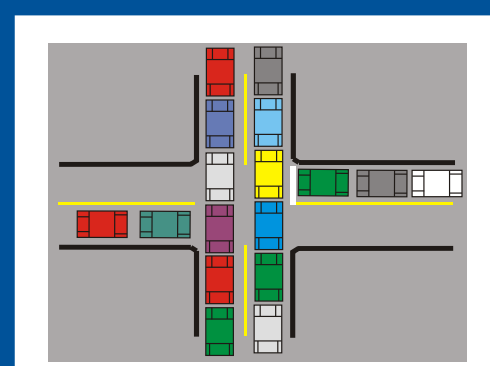
- Approaching unstable condition with increasing congestion
- Delay: 35 to 55 seconds/vehicle



- Unstable, congested condition
- Delay: 55 to 80 seconds/vehicle

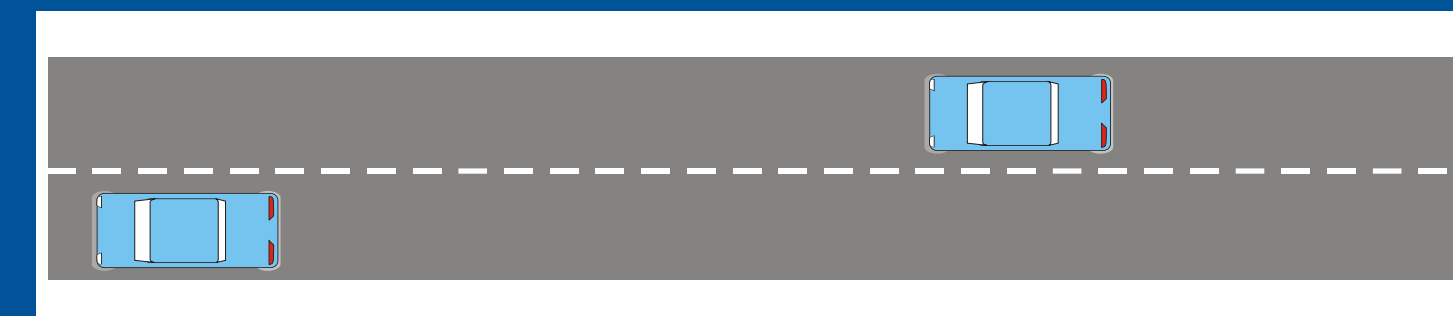


- Stop and go
- Delay: >80 seconds/vehicle



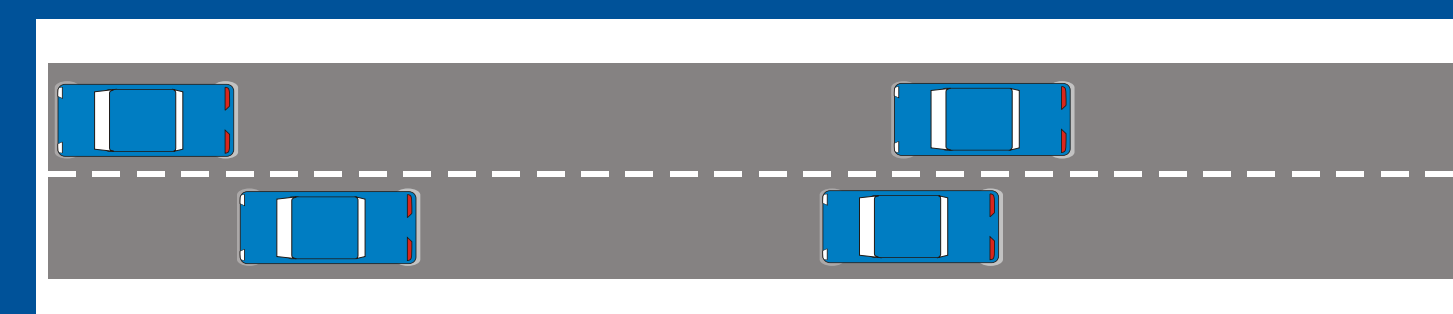
Roadway

LOS A



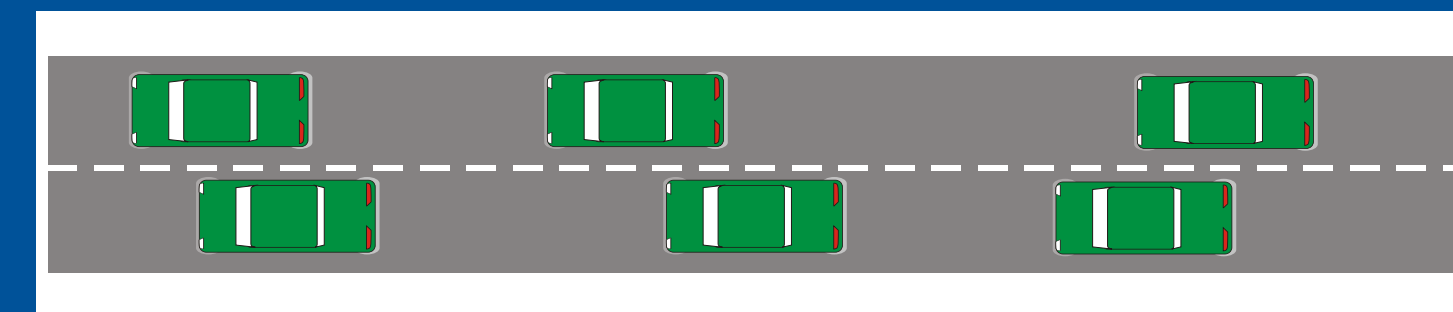
- Free flowing
- Uninterrupted vehicle

LOS B



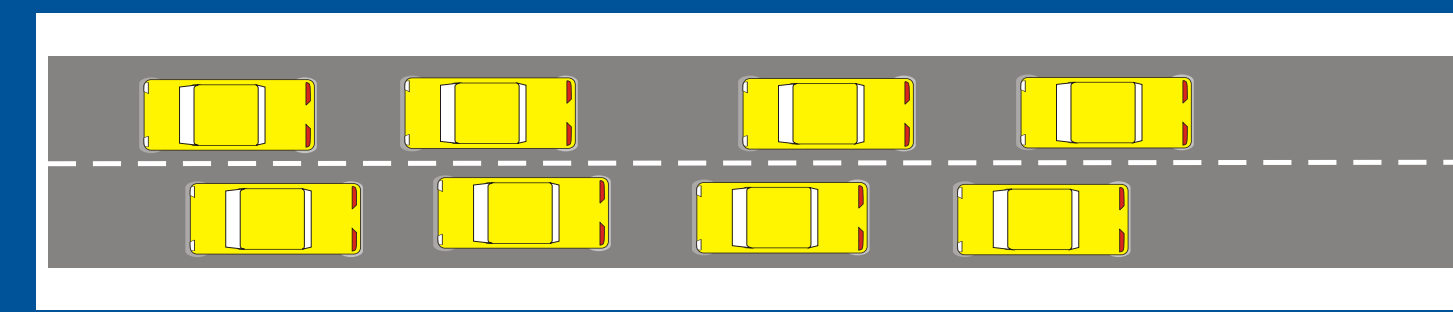
- Stable flow
- Other vehicles are more noticeable

LOS C



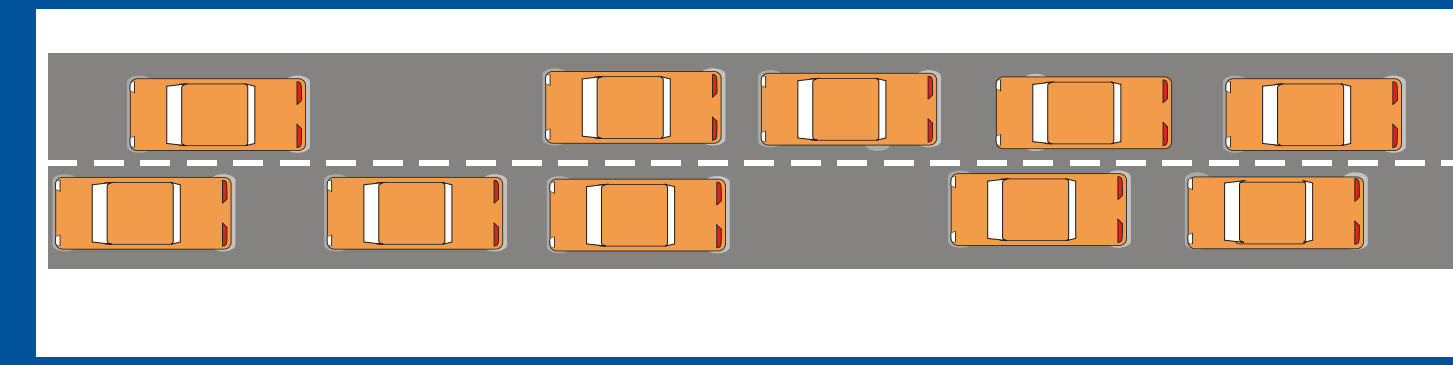
- Stable flow
- Vehicle operations affected by other vehicles

LOS D



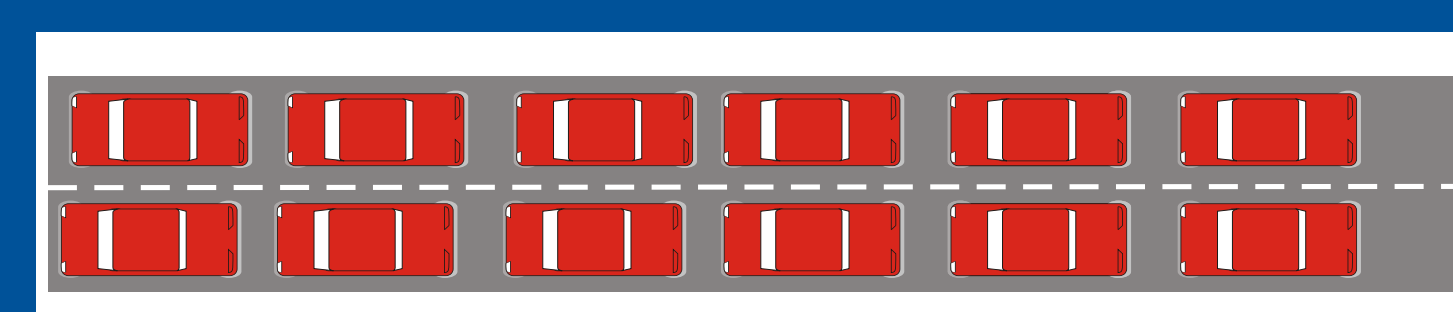
- High density free flow
- Operation of vehicle is affected by other vehicles

LOS E



- High density traffic flow, nearing capacity
- Operating conditions are extremely poor

LOS F



- Forced or breakdown flow
- Amount of traffic exceeds capacity